



Roll-In Dock Buyer's Guide



Create the layout you desire.

Mushroom Color Titan Panels

175-91010 4' x 16' Frame with Titan Vinyl Panels

175-91020 4' x 12' Frame with Titan Vinyl Panels

175-91050 4' x 8' Frame with Titan Vinyl Panels

176-91000L 4' Corner Section with Titan Vinyl Panel : Left

176-91000R 4' Corner Section with Titan Vinyl Panel : Right



Gray Color Titan Panels

175-91210 4' x 16' Frame with Titan Vinyl Panels

175-91220 4' x 12' Frame with Titan Vinyl Panels

175-91250 4' x 8' Frame with Titan Vinyl Panels

176-91200L 4' Corner Section with Titan Vinyl Panel : Left

176-91200R 4' Corner Section with Titan Vinyl Panel : Right

Ramp Sections are shown in accessories at the back of this guide.

Determine how each frame will connect.

Each frame comes with a bolt kit for the Standard Connection of frames. This standard kit includes 8 bolts and 8 nuts plus 2 reinforcement plates. Two additional connection options are available.

175-40220 Single Stage Connection Brackets (Set)

The Single Stage Hook System allows you to connect sections into any desired layout without any tools and provides ease of installation and removal. You can unlock one section at a time.

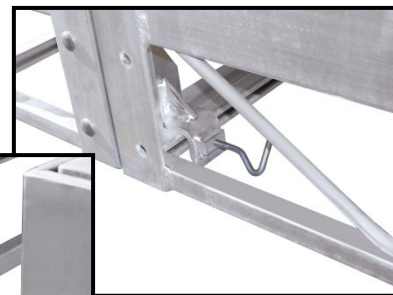
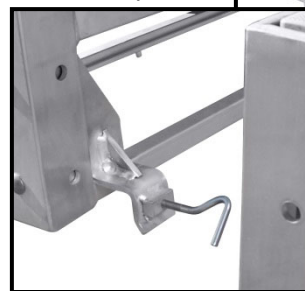
175-40200 Dual Stage Connection Brackets (Set)

The Dual Stage Hook System gives you the ability to maneuver over uneven shorelines and remove multiple sections at the same time.

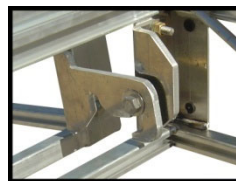


Standard Bolt Connection

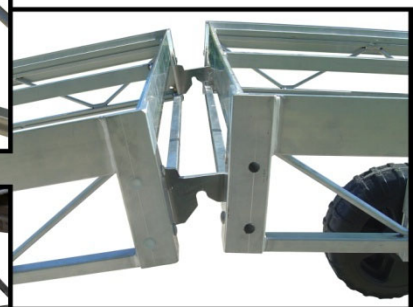
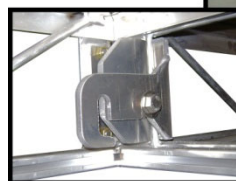
Single Stage Connection System



Unlocked



Locked



Dual Stage Connection System

Ramp Sections are shown in accessories at the back of this guide.

Determine wheel kits that you will need.

Wheel kits are available for the many configurations that you may create and varying water depths. You may need wheels for every section or just one pair at the end of the dock. Choose from these options:

Straight Dock Sections

175-95210 Extra Shallow Water Kit : 18" – 26" of Water (Braced Pair)

175-95220 Shallow Water Kit : 24" – 42" of Water (Braced Pair)

175-95240 Medium Water Kit : 36" – 60" of Water (Braced Pair)

175-95260 Deep Water Kit : 46" – 74" of Water (Braced Pair)



Straight Dock Section with Wheel Kit

L Dock Sections

175-95120 Shallow Water Kit : 24" – 42" of Water (Braced L Pair)

175-95140 Medium Water Kit : 36" – 60" of Water (Braced L Pair)

175-95160 Deep Water Kit : 46" – 74" of Water (Braced L Pair)

175-951205 Shallow Water Kit : 24" – 42" of Water (Braced L Single)

175-951405 Medium Water Kit : 36" – 60" of Water (Braced L Single)

175-951605 Deep Water Kit : 46" – 74" of Water (Braced L Single)

Water Depths based on 18" from top of the dock to the top of the water.



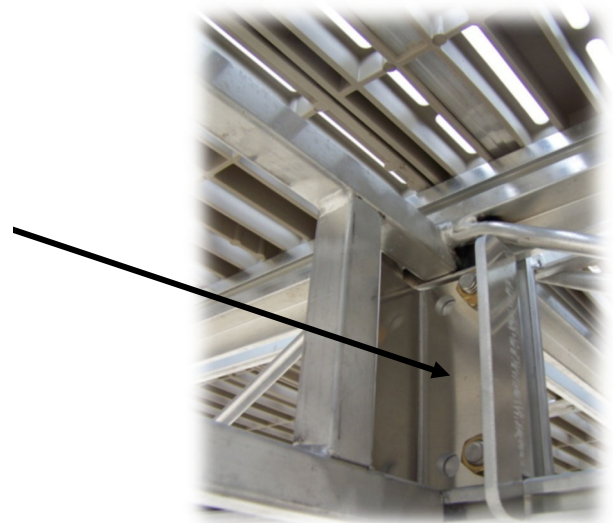
Dock with L Section and Wheel Kit

Wheel Kits for Braced L Pair include the bolt kit

175-40190 for the first L Section.

175-40190 Bolt Kit : First L Section

If you attach a 4'x8' or 4'x12' dock frame to the side of the main dock, you need Bolt Kit 175-40190. This bolt kit will include the additional bracket, spacer plate and fasteners. This bolt kit will allow you to properly install the first L section to the main dock.



Adding a 2nd L Section

175-40196 Bolt Kit : Second L Section & 12' Tube Kit

This part number includes the required kits for a roll-in dock that has 2 L Sections.

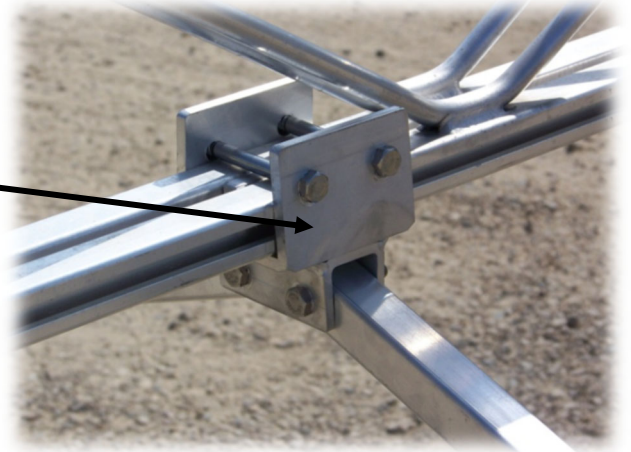
Kits : 175-40192 & 175-40195

175-40192 Bolt Kit : Second L Section

In any layout that has 2 or more L sections, an additional bracket is needed for bracing the wheel kit. One of the brackets is supplied with the wheel kits for L Dock layouts. An additional bracket will be needed when the legs spread further apart with 2 or more L sections.

175-40195 12' Tube for Platform Support

For additional support under a platform with 2 L sections , an optional 1" x 2" tube is available to u-bolt to the underside of the dock frames. This tube will give additional strength and stability to the platform.



NOTE : Wheels may be installed to the inside of dock for installation of a boat lift next to the dock.

Optional Adjustment Crank

1-1/8" socket with handle to easily adjust height of the dock.

175-42000 Adjustment Crank



Determine location of post kits that you will need to support your dock.

Post kits are available to provide support in many locations on any dock layout.

- 175-96010 Post Kit : 14" Pocket 2' Drop Leg (Pair)
- 175-96020 Post Kit : 14" Pocket 4' Drop Leg (Pair)
- 175-96030 Post Kit : 14" Pocket 6' Drop Leg (Pair)
- 175-96040 Post Kit : 14" Pocket 8' Drop Leg (Pair)

- 175-960105 Post Kit : 14" Pocket 2' Drop Leg (Single)
- 175-960205 Post Kit : 14" Pocket 4' Drop Leg (Single)
- 175-960305 Post Kit : 14" Pocket 6' Drop Leg (Single)
- 175-960405 Post Kit : 14" Pocket 8' Drop Leg (Single)

A **Wheel Kit** is available for the posts. Simply add to any Post Kit to create an economical and adjustable wheel kit.

- 175-96100 Wheel Kit Post (Pair)



A **Brace Kit** is available for the posts. 175-96200



Use Post Kits to create a Free-Standing Dock.



Use a single post for additional strength and stability on a platform.

The combination of a 2' Post Kit 175-96010 or a 4' Post Kit 175-96020 and Wheel Kit 175-96100 will make an adjustable shore end wheel kit.

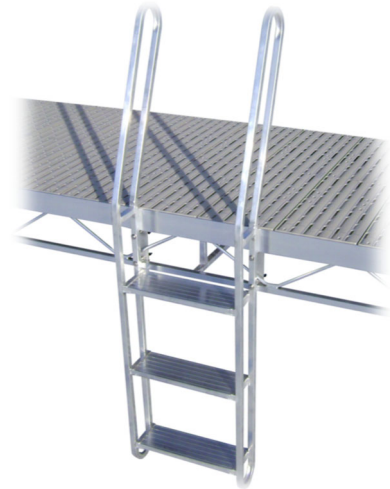
Choose Accessories for your roll-in dock.

Ladders

The all-aluminum ladder extends high above the dock for enhanced leverage when climbing out of the water.

175-98010 3 Step Ladder

175-98015 4 Step Ladder



Benches

Enjoy the day while resting on your Pier Pleasure bench. The aluminum frame with slanted backrest and plank seating provide a comfortable place to relax and enjoy your dock.

175-98020 4' Tan Vinyl Bench

175-98025 4' Gray Vinyl Bench

Bench Canopies

A bench canopy will provide cool comfort while you relax on your bench.

ACBNCH-CNPY Bench Canopy Frame

CS-BENCH Seamark Fabric Bench Tarp

Available in Hemlock Tweed (Green), Dubbonet Tweed (Burgundy), Linen Tweed (Tan), Cadet Gray and Royal Blue Tweed.

CH-BENCH Hydrofend Bench Tarp

Available in Green, Gray, Maroon, Navy and Tan



Bench Arm Rests

Add bench arm rests to hold your drink while enjoying your warm afternoon.

ACBNCH-ARMRSTVT Tan Vinyl Bench Arm Rest



Additional Accessories for your roll-in dock.

Shore End Hitch [175-98005](#)

Use your ATV, garden tractor or any vehicle with ball hitch to maneuver your Roll-In dock system.



Canoe Rack [175-98060](#)

The canoe rack makes storage of your canoe or kayak simple. The canoe is at the water – ready to go when you are.



Movable Cleat [ACCLT-ASMBY](#)

Place these movable aluminum cleats where needed on the dock. Can be easily moved.



Dock Stairs

Safe access in and out of the water for young children and older adults. Adjustable for your lake bottom with drop legs that can be easily adjusted.

[ACSTEP5](#) Dock Stairs : 5 Steps

[ACSTEP6](#) Dock Stairs : 6 Steps

[ACSTEP7](#) Dock Stairs : 7 Steps

[ACSTEP8](#) Dock Stairs : 8 Steps



Dock Railing

Add safety to your dock for children and older adults. Standard with 2 rails. An additional rail is available. Constructed of aluminum with a powder-coated finish to keep your hands and clothes clean.

[ACRAIL8](#) 8' Dock Railing

[ACRAIL4](#) 4' Dock Railing



Additional Accessories for your roll-in dock.

4' Vertical Bumper : Adjustable Height

Protect your boat. The vertical bumper is sturdy, holds the boat away from the dock and is easy to tie to. Adjust the height as the water fluctuates.

175-98050 4' Adjustable Vertical Bumper



Ramps

175-91090 4' x 4' Ramp : Mushroom Titan Panel

175-91095 4' x 8' Ramp : Mushroom Titan Panel

175-91110 4' x 12' Ramp : Mushroom Titan Panel

175-91290 4' x 4' Ramp : Gray Titan Panel

175-91295 4' x 8' Ramp : Gray Titan Panel

175-91300 4' x 12' Ramp : Gray Titan Panel



Windsock Pole

Display your favorite windsock on this telescoping fiberglass pole. Easy to remove.

ACPWS Windsock Pole



Corner Bumper

Protect your investment by installing bumpers on the corner of the dock.

175-41080 Corner Bumper



Flagpole

ACPFFC-20 20' Telescoping Flagpole

175-98075 Flagpole Mounting Bracket

**All accessories that attach to the Pier
Pleasure Sectional Dock will also attach to
the Roll-In Dock.**