



1270 N River Drive • Mankato, MN 56001
Phone 800.658.7010 • www.pierpleasure.com

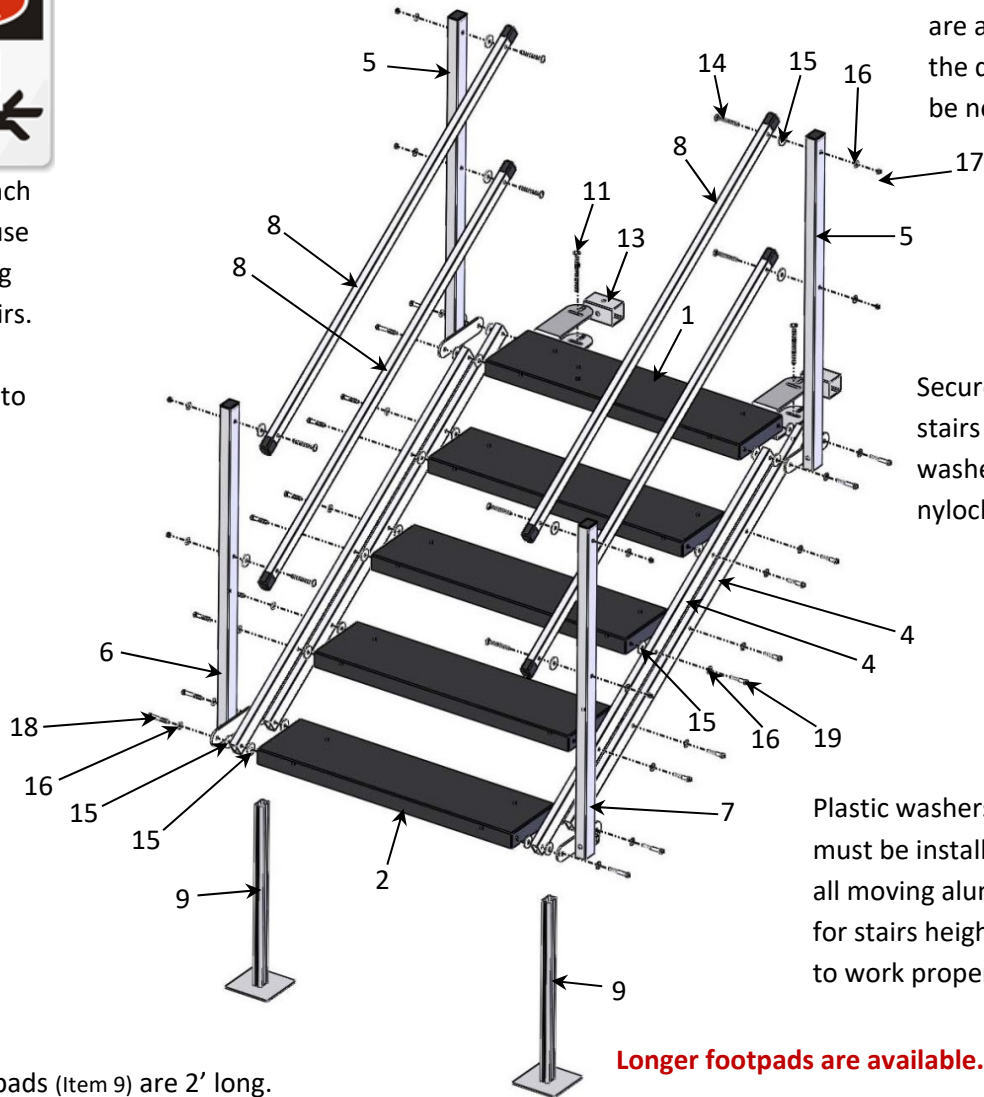
Dock Stairs Assembly Manual 5, 6, 7, 8, 9 Steps





There are several pinch points that could cause injury when actuating the incline of the stairs. Use caution when making adjustments to the dock stairs.

Use grease or spray lubricant on the truss head bolts for railing tubes (Item 14). This will help prevent the stainless jam lock nuts from seizing on truss head bolt when using power tools to tighten the nuts.



Spacer Blocks (Item 13) are optional. If stairs are attached to side of the dock, they will not be needed.

Secure bolts under stairs with flat washers and brass nylock nuts.

Plastic washers (Item 15) must be installed between all moving aluminum parts for stairs height movement to work properly.

Standard step footpads (Item 9) are 2' long. Longer step footpads are available.

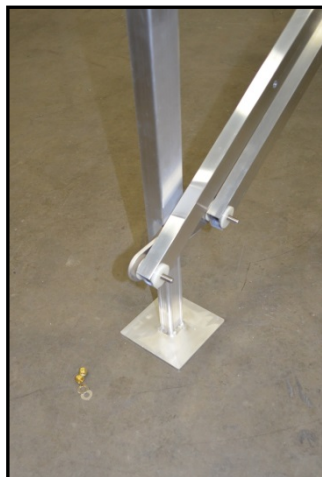
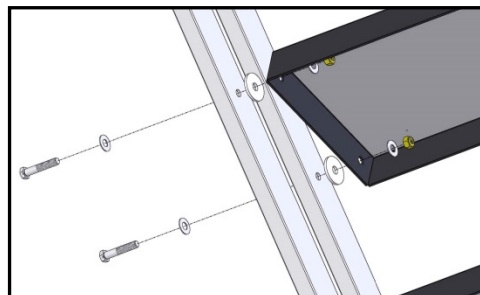
Longer footpads are available.

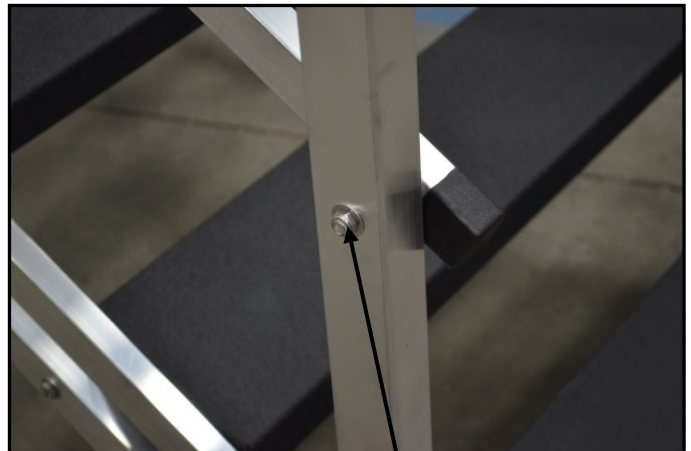
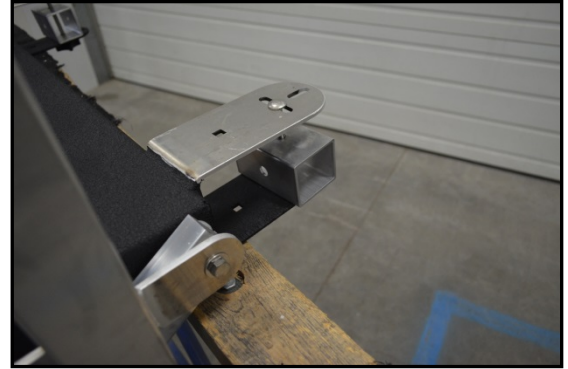
- DO NOT TIGHTEN BOLTS UNTIL ALL FASTENERS ARE IN PLACE!
- Set-up top step (Item 1) by attaching to something that is waist high or taller for a good working height while assembling the dock stairs.
- Attach 1" x 2" support tubes (Item 4) and top posts (Item 5) to the top step using 3/8" x 2-1/2" bolts, 3/8" flat washers, 3/8" plastic washers, 3/8" brass nylock nuts.
- Install the step footpads (Item 9) into the bottom posts (Items 6 & 7). Tighten set screws.
- Attach 1" x 2" support tubes (Item 4) and the bottom posts (Items 6 & 7) to the bottom step (Item 2) using 3/8" x 2-1/2" bolts, 3/8" flat washers, 3/8" plastic washers, 3/8" brass nylock nuts.
- Install the remaining steps (Item 2) using 3/8" x 2" bolts, 3/8" flat washers, 3/8" plastic washers and 3/8" brass nylock nut. A flat washer and brass nylock nut are used under the step to secure the bolt.
- Install the railing tubes (Item 8) as shown to the posts using 3/8" x 3" truss head bolts, 3/8" plastic washers, 3/8" flat washer, and 3/8" SS Jam Lock Nuts. The truss head of the bolt should be to the inside of the stairs. Rivets installed on the end caps should be on the underside facing the ground.
- Tighten all nuts to engage locking nuts. Do not over-tighten.

Item	Part Number	Description	ACSTEP-5 5 STEP	ACSTEP-6 6 STEP	ACSTEP-7 7 STEP	ACSTEP-8 8 STEP	ACSTEP-9 9 STEP
1	ASMBY-STEP-TOP	Top Step Assembly	1	1	1	1	1
2	100-12-936-STEP	9" x 36" Step	4	5	6	7	8
5	ASMBY-STEP-POSTA	Post, Top	2	2	2	2	2
6	ASMBY-STEP-POSTL	ASMBY-STEP-POSTL Post with Set Screw	1	1	1	1	1
7	ASMBY-STEP-POSTR	ASMBY-STEP-POSTR Post with Set Screw	1	1	1	1	1
9	ASMBY-STEP-FTP	Step Footpad : 2'	2	2	2	2	2
4	130-125725-STEP	1" x 2" Support Tube : 57-1/4"	4				
4	130-127125-STEP	1" x 2" Support Tube : 71-1/4"		4			
4	130-128525-STEP	1" x 2" Support Tube : 85-1/4"			4		
4	130-129925-STEP	1" x 2" Support Tube : 99-1/4"				4	
4	130-1211325-STEP	1" x 2" Support Tube : 113-1/4"					4
8	ASMBY-STEP-RAIL05	1" x 1-1/2" Tube : 60-1/2"	4				
8	ASMBY-STEP-RAIL06	1" x 1-1/2" Tube : 74-1/2"		4			
8	ASMBY-STEP-RAIL07	1" x 1-1/2" Tube : 88-1/2"			4		
8	ASMBY-STEP-RAIL08	1" x 1-1/2" Tube : 102-1/2"				4	
8	ASMBY-STEP-RAIL09	1" x 1-1/2" Tube : 116-1/2"					4

Bolt Kits (List of fasteners provided in bolt kit)

Item	Part Number	Description	BLTKT- STEP-05	BLTKT- STEP-06	BLTKT- STEP-07	BLTKT- STEP-08	BLTKT- STEP-09
11	140-37-5-CB	3/8" x 5" SS Carriage Bolt	2	2	2	2	2
12	140-37-KNOB	3/8" Black Knob	2	2	2	2	2
13	130-225254-BLCK	Spacer Block	2	2	2	2	2
14	140-37-3-THB	3/8" x 3" SS Truss Head Bolt	8	8	8	8	8
15	140-37-WP	3/8" Plastic Washer	36	40	44	48	52
16	140-37-W	3/8" SS Flat Washer	48	52	56	60	64
17	140-37-NJL	3/8" SS Jam Lock Nut	8	8	8	8	8
18	140-37-25-B	3/8" x 2-1/2" SS Bolt	8	8	8	8	8
19	140-37-2-B	3/8" x 2" SS Bolt	12	16	20	24	28
20	140-37-NL	3/8" Brass Nylock Nut	20	25	29	33	37





Use grease or spray lubricant on the 3/8" x 3" truss head bolts for the railing tubes. This will help prevent the stainless jam lock nuts from seizing on the truss head bolts when using power tools to tighten the nuts.